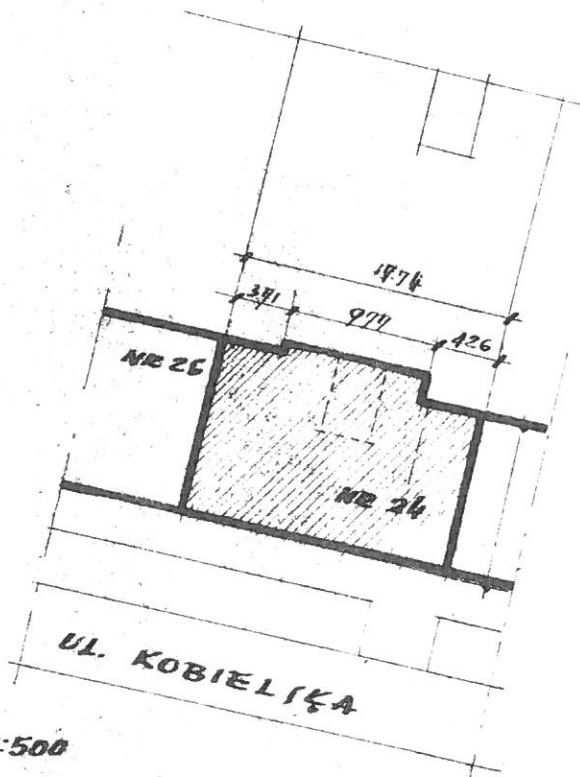




ORIENTACJA 1:10000



SYTUACJA 1:500

UL. KOBIELSKA 24

projekt nr. remontu bud.
mieszkalnego

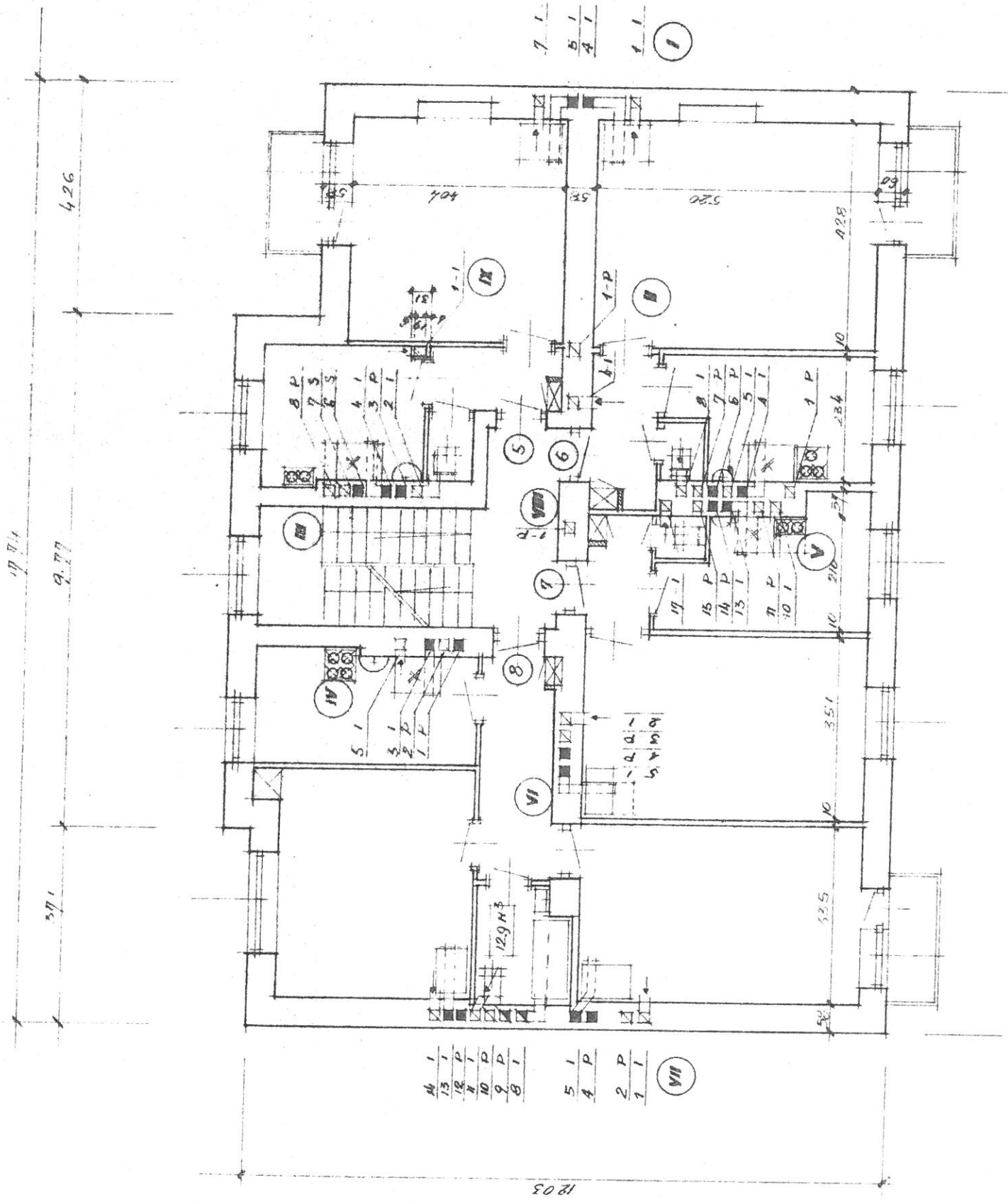
inż. B. Chmiel

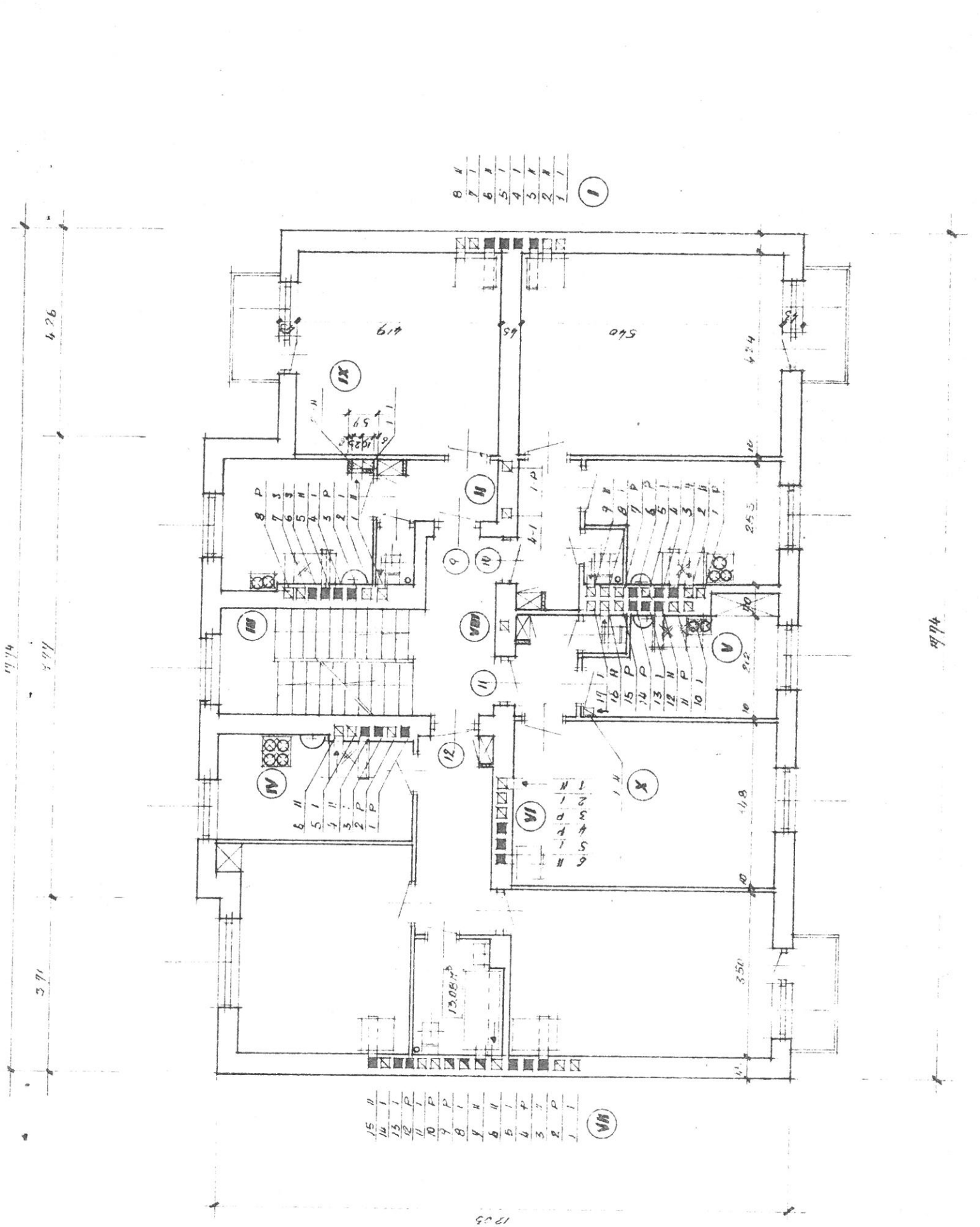
inż. T. Basiński

22-89-69

XII 1969

1





- 8 II
- 7 I
- 6 II
- 5 I
- 4 I
- 3 II
- 2 II
- 1 I

(I)

- 15 II
- 14 I
- 13 I
- 12 P
- 11 I
- 10 P
- 9 P
- 8 I
- 7 II
- 6 II
- 5 I
- 4 P
- 3 I
- 2 P
- 1 I

(VIII)

12.05

4.74

4.97

5.91

4.26

4.74

3.50

1.8

2.2

2.55

4.24

6.14

5.40

(IX)

(III)

(IV)

(VII)

(II)

(VI)

(V)

(X)

(9)

(10)

(12)

(11)

(13)

(14)

(15)

(16)